

Certificate III in Individual Support (Ageing)

"I have always wanted to make a difference, and now I can!"

About the course

This CHC33015 Certificate III in Individual Support (Ageing) reflects the role of workers in the community and/or residential setting who provide person-centred support based on individual needs.

Duration: Classroom Based - 45 weeks

Traineeships QLD: Full Time - 12 months

Part Time - 24 months

School Based - 24 months

This course includes

- Working one on one with elderly people to maximise independence and build well-being.
- Learn to work legally and ethically with a diverse range of people
- Provide individualised support
- Understanding safe work practices for direct client care.

Entry requirements

No entry requirements for this qualification
Students should have ACSF level 3 written and spoken English and numeracy to be able to meet the foundational skills requirements.

Where to from here?

Job prospects from this qualification include, Assistant Nurse, Carers and Aides, Personal Care Assistant, Support Worker, Aged Care Worker, Community Care Worker, Residential Care Officer.

Training for You

To find out more about our courses and how we can help you on your journey contact us at the below:

Phone 1800 021 560

Email info@maxsolutions.edu.au

Web maxsolutions.com.au/training

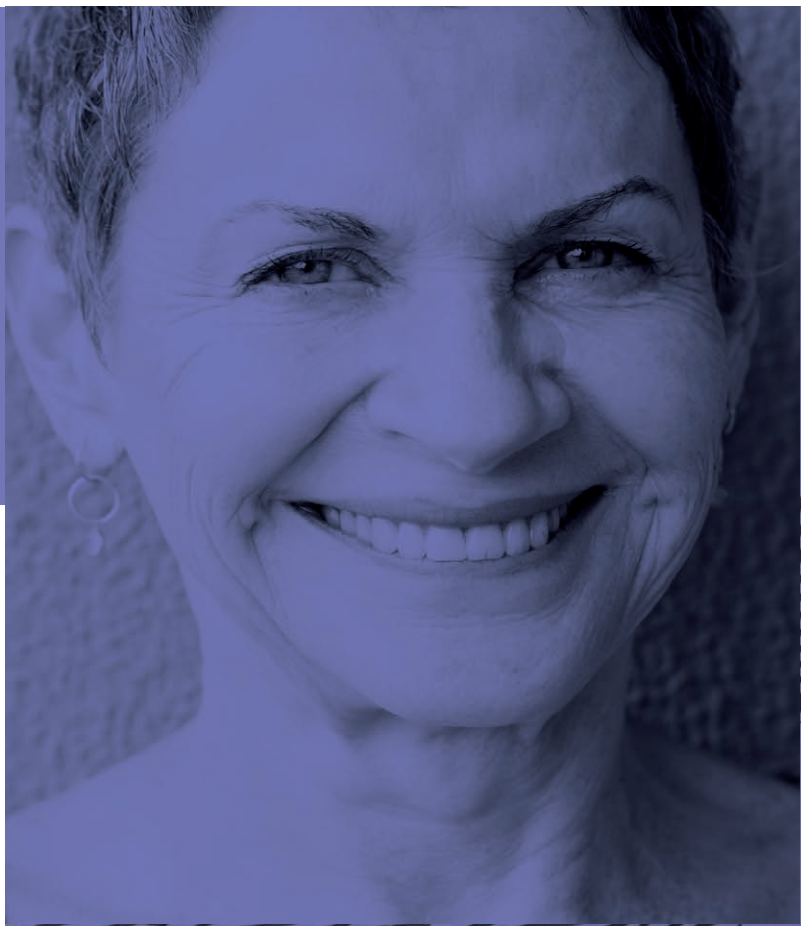
maxsolutions.com.au/training

Follow us on [Facebook.com/maxsolutionsau](https://www.facebook.com/maxsolutionsau)

MAX Solutions (RTO: 0667)



MAX Solutions



Certificate III in Individual Support (Ageing)

Recognition of Prior Learning (RPL) and Credit Transfers (CT)

Learners will be provided information about RPL and Credit Transfers prior to or upon enrolment and can discuss their application with their Trainer.

You can learn more about the RPL process at www.maxsolutions.com.au/training

Unique Student Identifier (USI)

All students undertaking Nationally Recognised Training in Australia will need to have a USI, Unique Student Identifier.

You will need your USI in order to apply to enrol for training.

Visit www.usi.gov.au for more information.

Units of Competency

Semester 1 Weeks 1 - 15

- BSBWOR301 Organise personal work priorities and development
- HLTWHS002 Follow safe work practices for direct client care
- CHCLEG001 Work legally and ethically
- CHCCOM005 Communicate and work in health or community services
- CHCDIV001 Work with diverse people
- HLTAAP001 Recognise healthy body systems

Semester 2 Weeks 16 - 30

- HLTINF001 Comply with infection prevention and control policies and procedures
- CHCAGE001 Facilitate the empowerment of older people
- CHCAGE005 Provide support to people living with dementia
- CHCCCS011 Meet personal support needs
- 60 hours Vocational Placement

Semester 3 Weeks 31 - 45

- CHCPAL001 Deliver care services using a palliative approach
- CHCCCS023 Support independence and wellbeing

- CHCCCS015 Provide individualised support
- 60 hours Vocational Placement
- Finalise assessment portfolios

Please note that semester breakdowns apply to Classroom based learning only.

More Information

For delivery locations, online learning, funding information, further courses and information on our policies and procedures, please visit our website or contact our team.

Phone 1800 021 560

Email info@maxsolutions.edu.au

Web maxsolutions.com.au/training